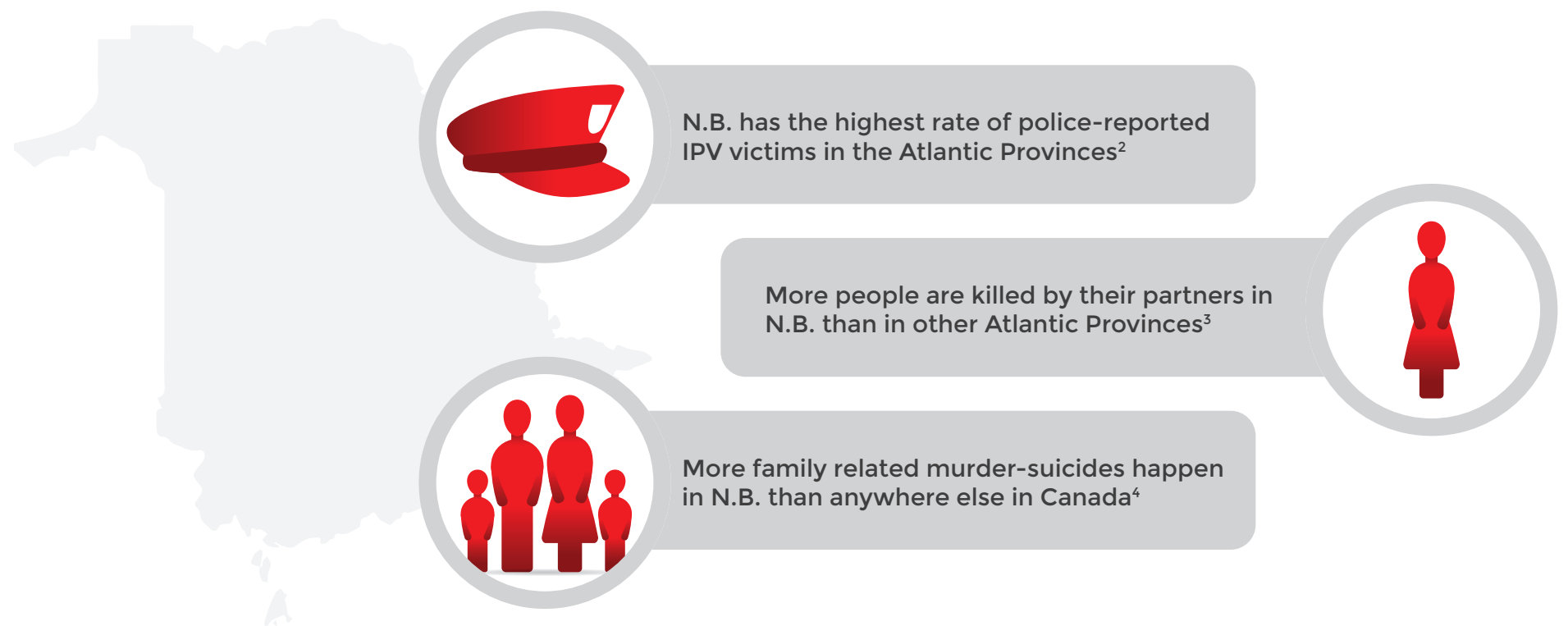
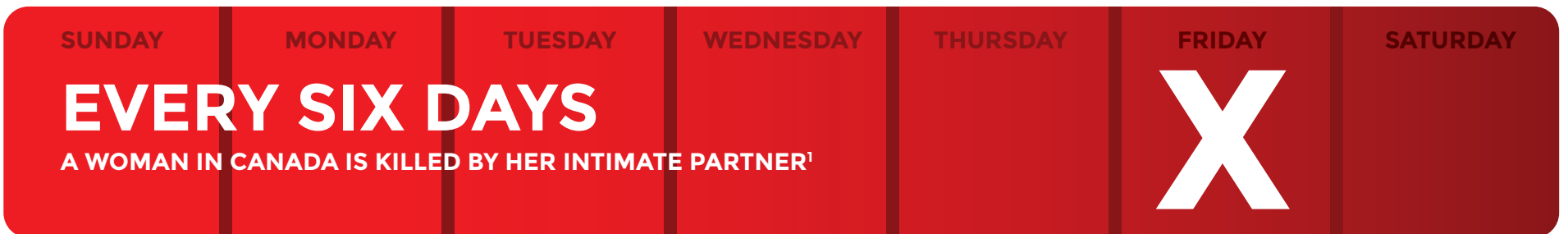


Love

Shouldn't Hurt

END INTIMATE PARTNER VIOLENCE

INTIMATE PARTNER VIOLENCE (IPV) BY THE NUMBERS



MORE THAN **85%** of police-reported spousal homicide victims are women⁵

TWO-THIRDS of all N.B. women killed were living with the accused⁶

70% OF THE DEATHS occurred in small towns and rural areas⁷

LOVE SHOULDN'T HURT. WANT TO DO SOMETHING ABOUT IT?
GO TO: WWW.GNB.CA/VIOLENCE

¹www.statcan.gc.ca/pub/85-002-x/2012001/article/11738-eng.pdf via Canadian Women's Foundation
²⁻⁴Sinha, M (2013) Family Violence in Canada: A Statistical Profile, 2011
⁵www.statcan.gc.ca/pub/85-002-x/2012001/article/11738-eng.pdf via Canadian Women's Foundation
⁶⁻⁷Doherty, D. (2006) Domestic Homicide in New Brunswick: An Overview